

HEALTHIER HOUSING SYSTEMS = HEALTHIER
YOUTH LIVING WITH HIV”

Quality Improvement Summit

October 18th 2023



UConn
HEALTH

“HEALTHIER HOUSING SYSTEMS = HEALTHIER YOUTH LIVING WITH HIV”

Danielle Warren-Dias, MS

Community Health Program Director

Nilda Fernandez-Betancourt, LMSW Community Health Program Clinical Supervisor

Consuelo Munoz, MSc.

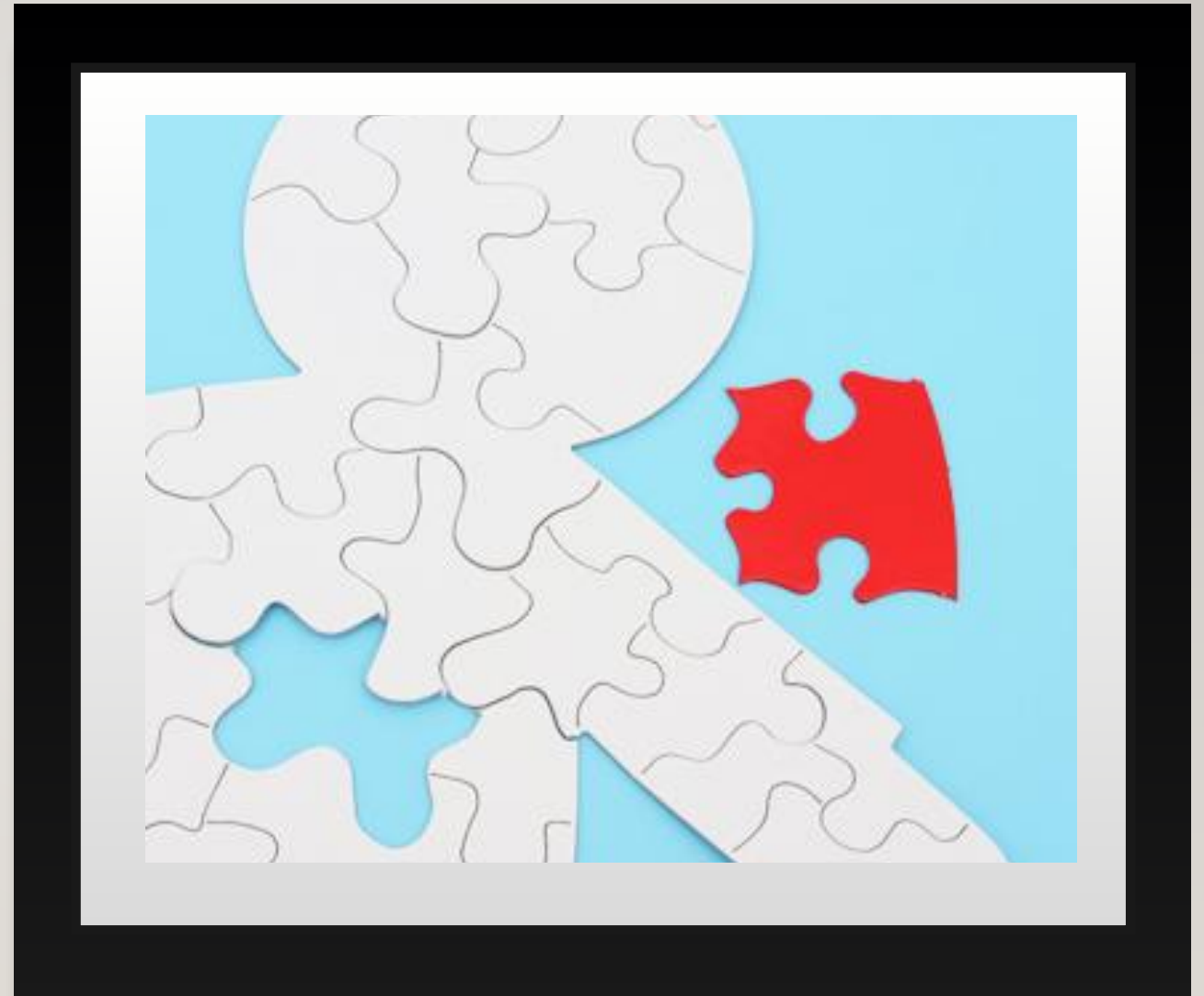
Community Health Worker/Housing Navigator

UConn Health/CT Children’s Pediatric, Youth and Family HIV Program



QUALITY IMPROVEMENT OBJECTIVES FOR HOUSING PROGRAM

- Innovation in leveraging funding
- Community partnerships
- Nuances of housing for youth and young adults experiencing homelessness
- Housing as health care and prevention
- Ways to leverage pertinent services



PROGRAM PRINCIPLES

- Community oriented-Pulse on the needs of the community in real time
- Client-centered
- Culturally Responsive & Inclusive
- Strength-based Approach – From Emergency Housing to Home Ownership



CARE AND TREATMENT SERVICES

- Outpatient/Ambulatory Medical Services
- Medical Case Management
- Nutritional
- Peer to Peer Psychosocial Groups
- Food Vouchers
- Medical Transportation



PREVENTION SERVICES

- Hartford Youth Health Identification and Linkage (HYHIL) Consortia
- Routine HIV Testing
- PrEP Navigation



YOUTH HOUSING STABILIZATION PROGRAM-BACKGROUND

- Awarded for the 2019-2020 RWHAP, Part D Supplemental funding for our Youth Housing Stabilization Program. Viral load for youth experiencing homelessness was 43%.
- Granted – 3 components:
 - Establish an emergency shelter appropriate for youth, particularly for LGBTQ+ youth
 - Assigned a Specific Housing Specialist/Navigator
 - Mandated by HRSA – establish or participate in a youth housing network.
- In 2020, COVID19 Pandemic– homelessness reached a peak among youth and women



BEST PRACTICES

- ❖ Environmental Landscape (i.e., COVID19 - need to be flexible/nimble to address the immediate needs of individuals-real time).
- ❖ Leveraging/Blending Funding Sources
 - ❖ Ryan White HIV/AIDS Program (RWHAP) Parts A, B, D and 340B



INTERACTIVE ACTIVITY

- ❖ What other funding resources would you add?



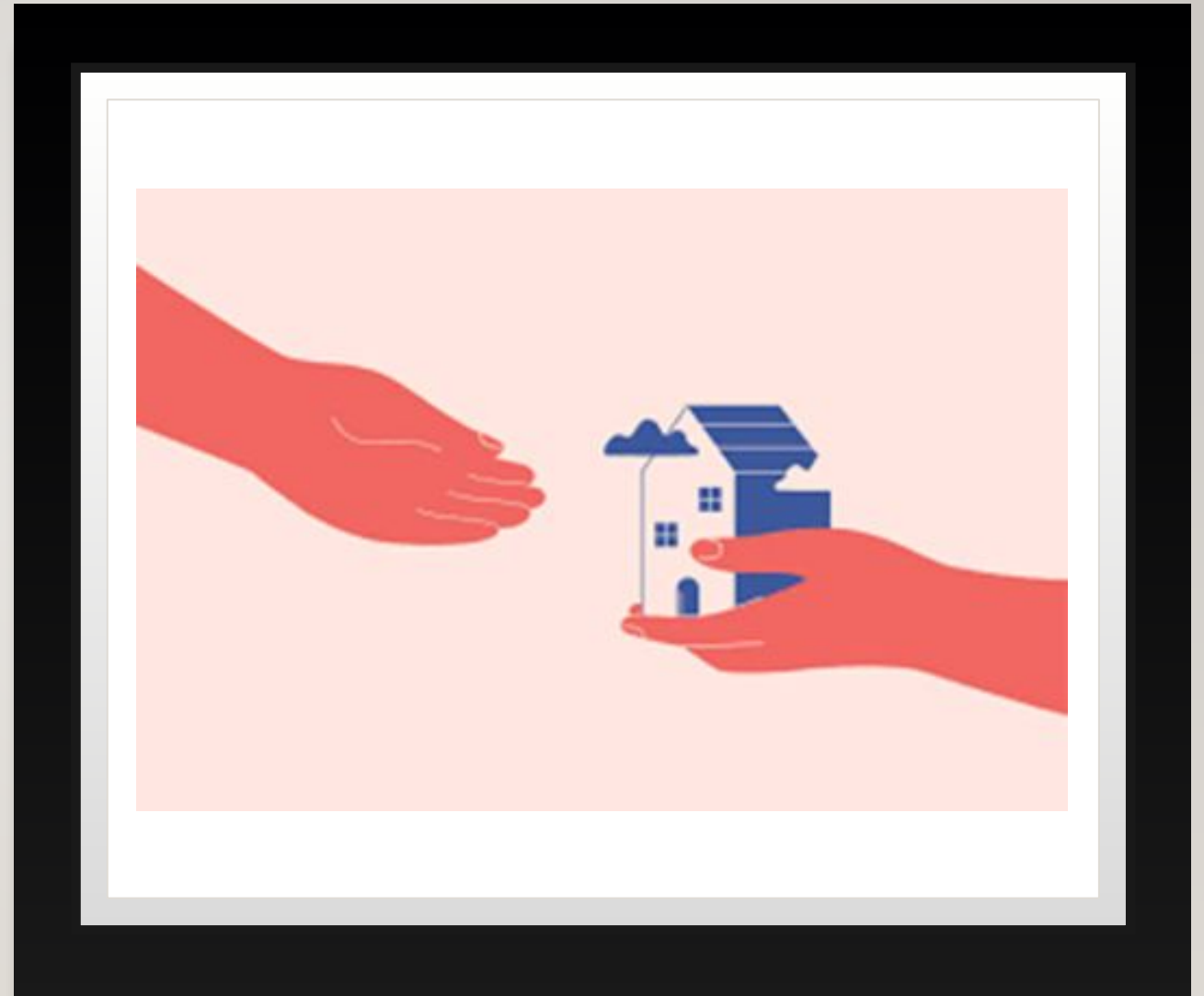
EMERGENCY SHELTER/SHELTER PLACEMENT

- ❖ Think outside of box to leverage resources
 - CT Dept. of Housing (DOH)
- ❖ LGBTQ+ Youth - Partnered with **San Juan Center, Inc.** rooming house and provide career/employment services.
- ❖ Ryan White HIV/AIDS Program (RWHAP)
 - Referrals to RW Client Assistance/Housing Services
 - Emergency Shelter/Hotel stays start at 21 days with options for extensions 2 week per extensions.



HOUSING NAVIGATION

- ❖ Dedicated staff to help clients navigate through the housing continuum/Housing Navigator
- ❖ Housing Opportunities for People Living with HIV/AIDS (HOPWA)
- ❖ Referrals
- ❖ Follow Up
- ❖ Advocacy



HOUSING NAVIGATION PROCESS

MCM's Referral to Emergency Housing

I. ACCESS

Hotel

Adolescent mothers with Children

Rooming House

Youths (LGBTQ+)

2. Assessment

1. Call 211

Access to:

- (CAN) Coordinated Access Network
- (# HMIS) Homeless Management Information System
- (VI-SPDAT) Vulnerability Index- Services Prioritization Decision Assistance

3. Journey Home

- Attending the Family, Individual solution meeting
- Requested Conference
- Homeless Verification
- Disabling Condition

3. Stabilization

2. HOPWA

Solution Meeting: matches clients to different housing programs according to client's needs. (i.e., rapid rehousing, transitional housing, permanent housing)

COORDINATED ACCESS NETWORK (CAN) AND COALITION TO END HOMELESSNESS



STRENGTHS

- Mutual Respect & Compassion
- Provider Trainings
- Advocacy
- Champion Landlords
- Homeownership possibilities (new)
- Coordination and leadership by Journey Home

WEAKNESSES

- Prioritization
- US Dept of Housing and Urban Development Housing (HUD) Definitions
- Process is slow
- Lack of housing/funding resources
- Prior Eviction/s is a Deterrent – not enough landlords

INTERACTIVE ACTIVITY:

Based on your experience what are some of the weaknesses you've identified in the housing system where you live/work?



QUALITY OF LIFE, HEALTH AND WELLBEING OUTCOMES

Youth Housing Stabilization program increased Immediate access to:

❖ **Emergency shelter**

- 90% of participants have been linked to Stable Housing

❖ **Linkage to Care**

- Viral Load Suppression - Baseline 43% Currently: 90%
- Syphilis Care/Treatment
- Mpox Vaccines (quality improvement program)
- Addresses Food Insecurity (food vouchers and other resources)
- 95% are currently employed 5% on disability
- Medical Case Management

“I’ve been so grateful for the housing program & especially my case manager. While entering the program I was not medicated, addicted & feeling lost and helpless. With the help of my case worker I was able to quickly locate housing quickly get connected with services and become more successful in meeting my everyday needs. Without the help of my case manager and the housing program I could not imagine where I would be at. My case manager is very knowledgeable in navigating HIV needs for young people and advocating one hundred percent for the young people she serves.”

-Participant-



RESOURCES

- CT Children's [Our Team](#)"
- Journey Home <https://journeyhomect.org/>
- San Juan Center <https://www.sanjuancenter.org/copy-of-inico-espanol>
- CT Coalition to End Homelessness <https://www.cceh.org/>
 - Coordinated Access Network
- United Way - 211 <https://www.211ct.org/>
- CT Department of Urban Housing and Development <https://www.hud.gov/connecticut>

THANK YOU!!!

QUESTIONS & ANSWERS

DWARREN@UCHC.EDU

CMUNOZ@UCHC.EDU

FERNANDEZ@UCHC.EDU



QUESTIONS & ANSWERS

